



Item No. 48659

STORM™



INTERMEDIATE
AGES 8 AND UP
35 PIECES
10 INCHES TALL
PAINT AND GLUE
• NOT INCLUDED •

Model is built to
1/12 Scale

READ THIS BEFORE YOU BEGIN: • Study the assembly drawings. • Each plastic part is identified by a number. • Check the fit of each piece before snapping or cementing in place. • Do not use too much cement to join parts. • Use only cement for polystyrene plastic. • Model may be painted to match photos on the box. • Allow paint to dry thoroughly before handling parts. • Scrape paint from areas to be cemented. • For better paint and decal adhesion, wash the plastic parts in a mild detergent solution; rinse and let dry.

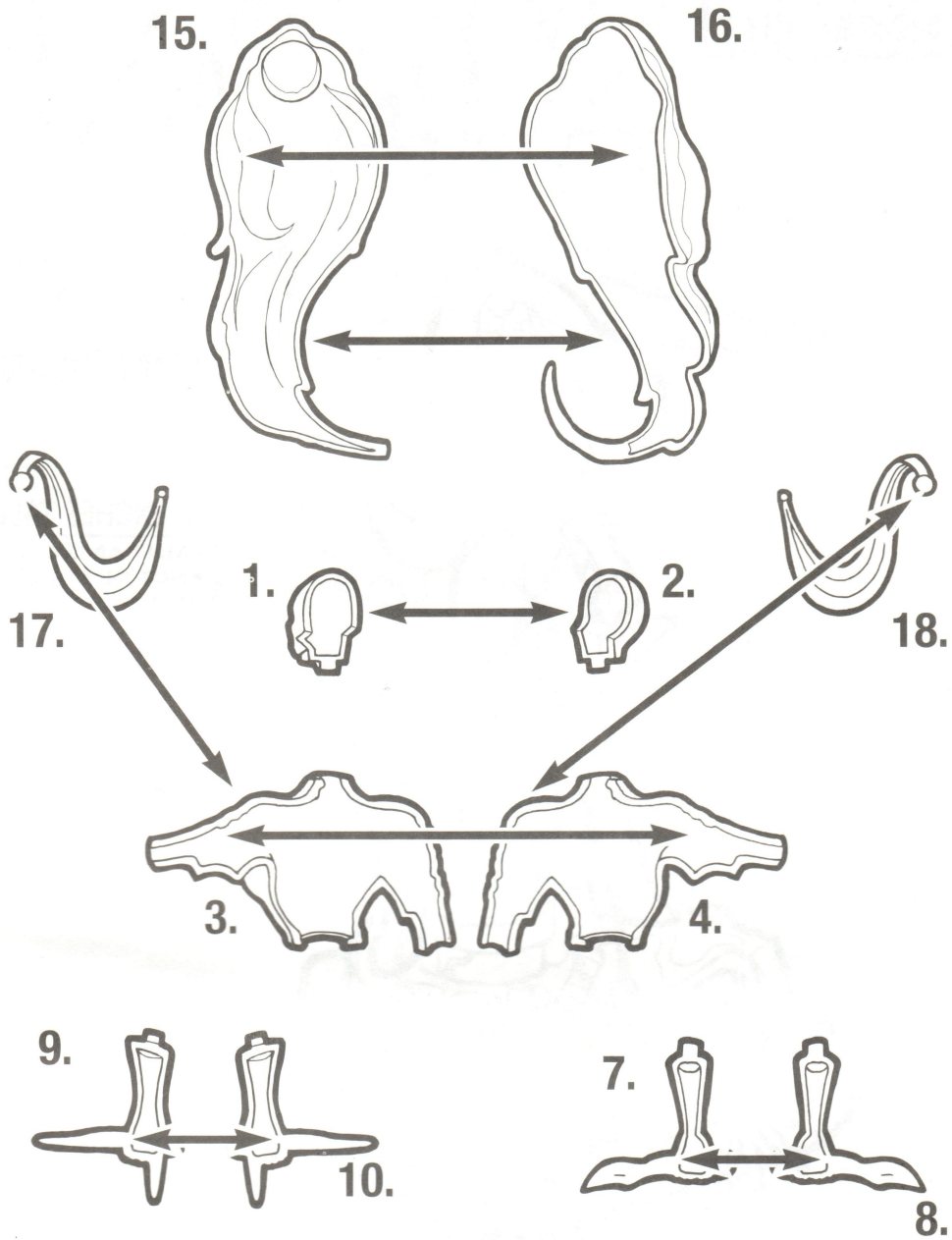
Artist: Joe Madureira Sculptor: Steve Kiwus

A desperate message from the Morlocks, mutants who dwell beneath the streets of New York City, sends Storm to their aid! But when she arrives at the Morlock tunnels, the wind-runner can find no trace of her allies. Then suddenly the attack comes—the sinister alien Brood blasts away at Storm with their plasma cannons! Summoning all her mutant weather-warping powers, Storm subdues the evil aliens, and rescues the Morlocks from their captors.

STEP

1

Upper Body Assembly



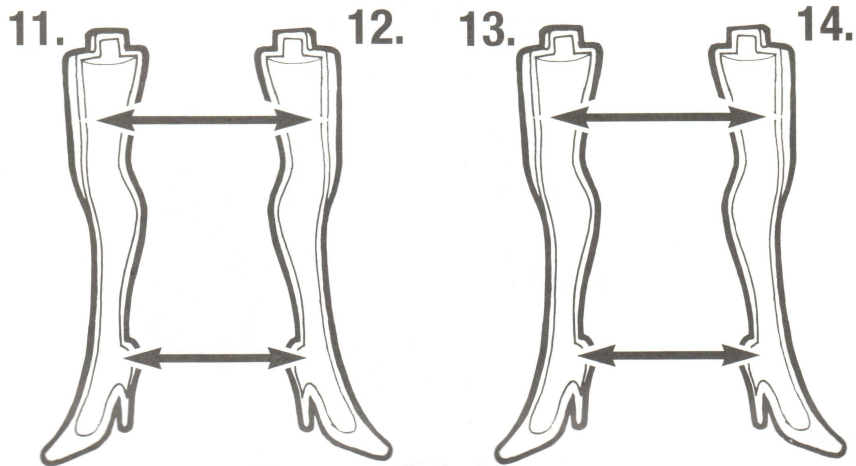
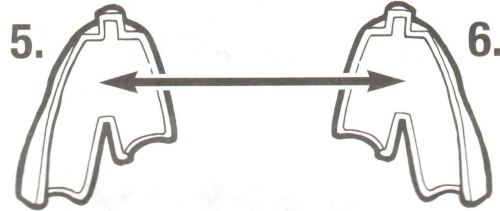
Completed Upper Body



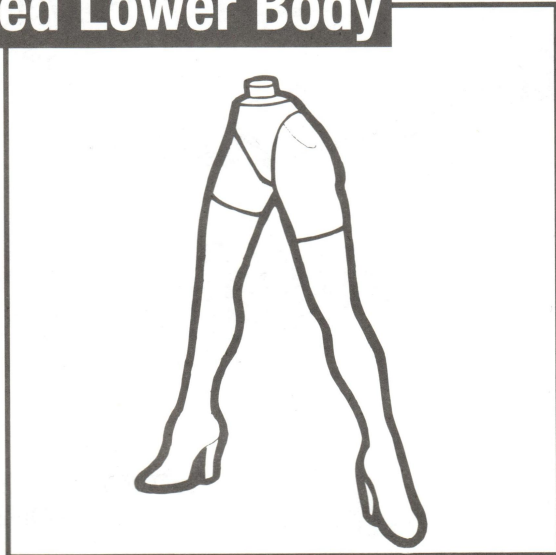
STEP

2

Lower Body Assembly



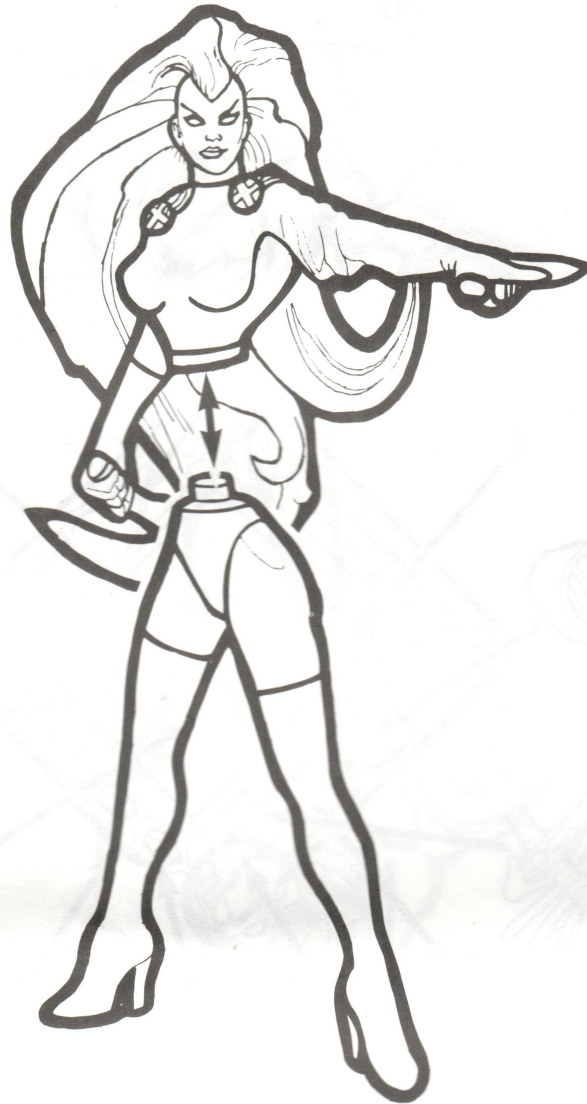
Completed Lower Body



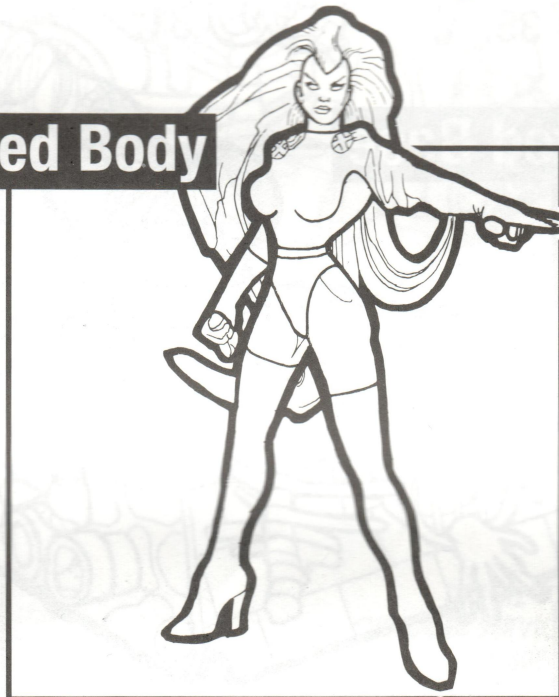
STEP

3

Body Assembly

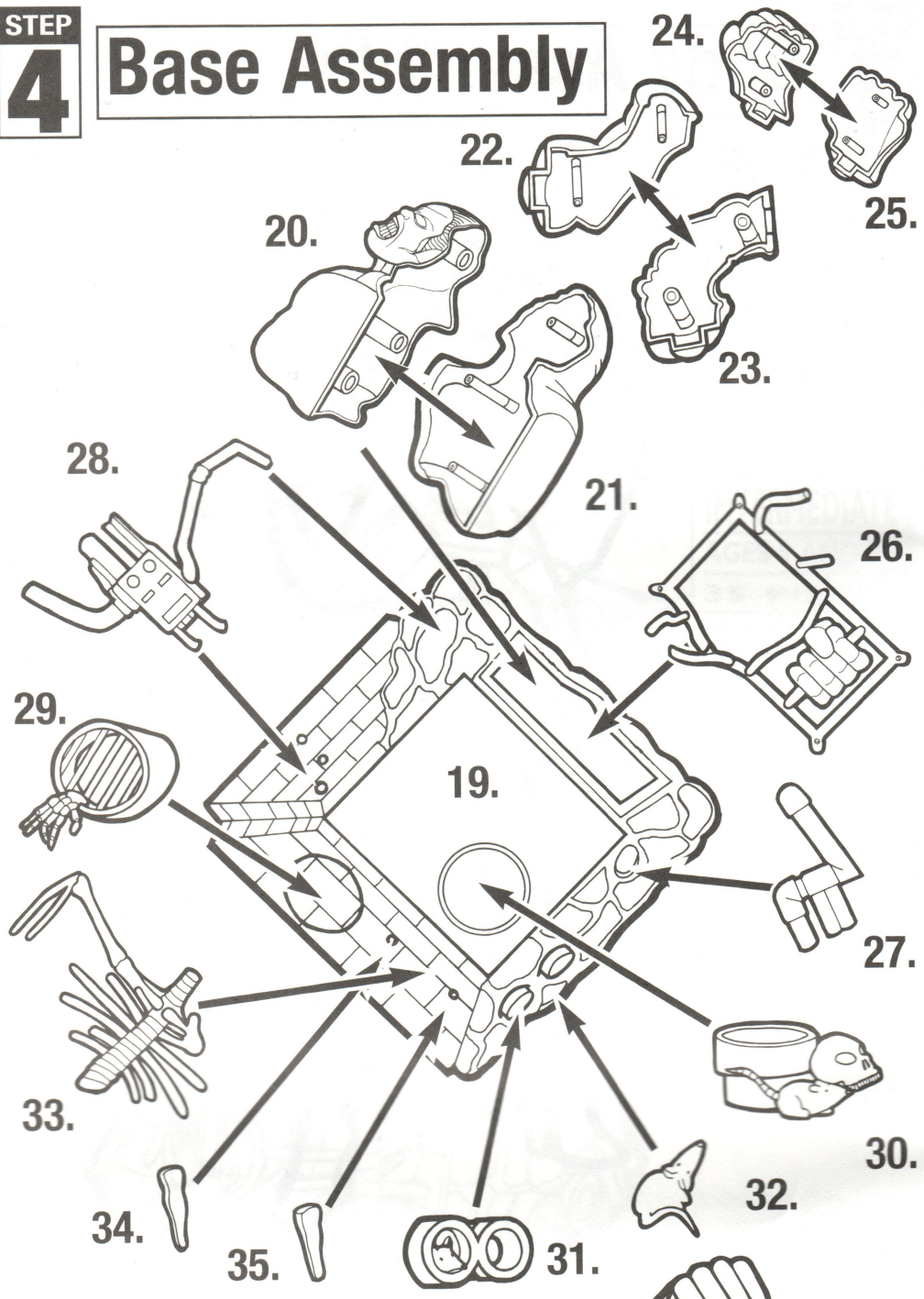


Completed Body

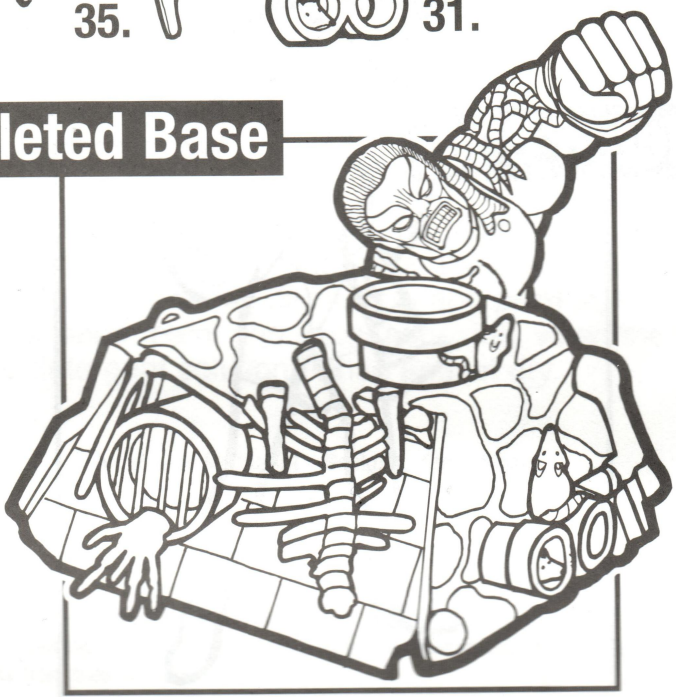


STEP
4

Base Assembly



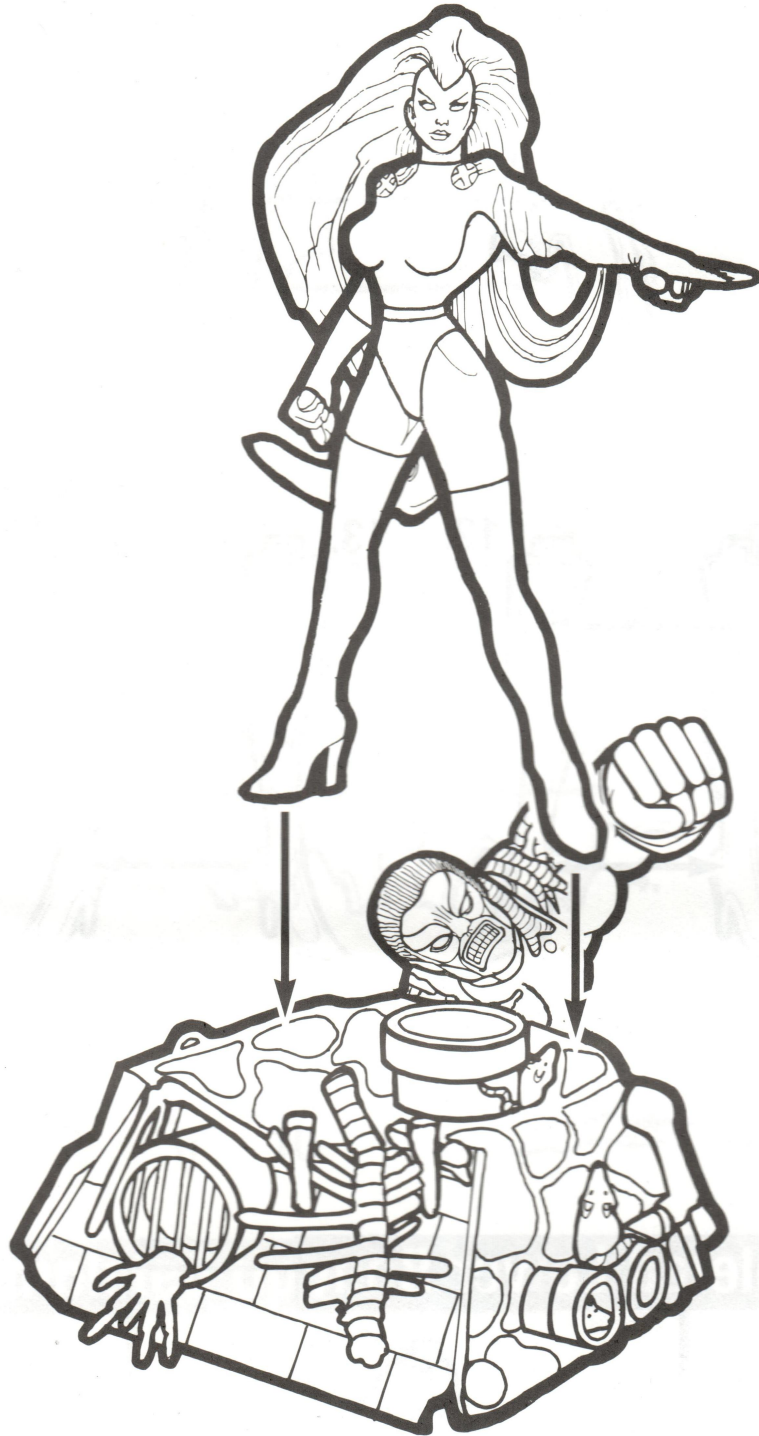
Completed Base



STEP

5

Final Assembly



TM and © 1996 Toy Biz, Inc.
All rights reserved. Printed in China.
© 1996 Marvel Characters, Inc.
All Rights Reserved.

**TOY BIZ™ TOLL FREE
CUSTOMER SERVICE NUMBER
1-800-634-7539**

